

# Cedar Link Project

Construction Update Q2 2025

Coastal GasLink



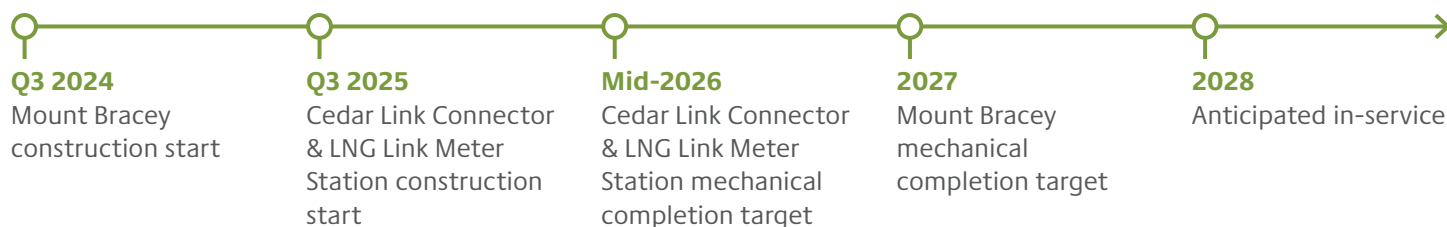
## About Cedar Link

To support Cedar LNG – the world's first Indigenous-majority-owned LNG project – Coastal GasLink is implementing the Cedar Link Project: a 0.4 km lateral pipeline which will deliver natural gas from Coastal GasLink to a connection to Cedar LNG. Cedar Link will enable delivery

of up to 0.4 billion cubic feet per day (bcf/d) of natural gas from Coastal GasLink to Cedar LNGs proposed floating liquefied natural gas (LNG) facility in Kitimat, BC, brought together by the Haisla Nation and Pembina Pipeline Corporation.

To support this incremental volume on the Coastal GasLink system, as well as LNG Canada's current and future operational needs once delivery to the Cedar LNG Plant begins, Coastal GasLink will also add a new meter station and a new compressor station to CGL as part of this Project.

## Timeline



## Project progress at a glance



**22.9%**  
Overall progress



**17.4%**  
Construction progress



**43.0%**  
Procurement progress\*  
\*100% of Purchase Orders/Requisitions Issued

— Coastal GasLink Pipeline (In operation)

### Facilities

- ▲ Mount Bracey (Supporting Cedar LNG)
- ◆ Coastal GasLink Metering Facility (Complete)
- ▲ Coastal GasLink Compression & Metering Facility (Complete)
- LNG Canada Facility (3rd party)
- Mount Bracey Lodge Workforce Accommodation

Cedar Link Connector & LNG Link Meter Station

# Mount Bracey Compressor Station

## Progress at a glance



**24.1%**

Overall progress



**19.1%**

Construction progress



**42.4%**

Procurement progress\*

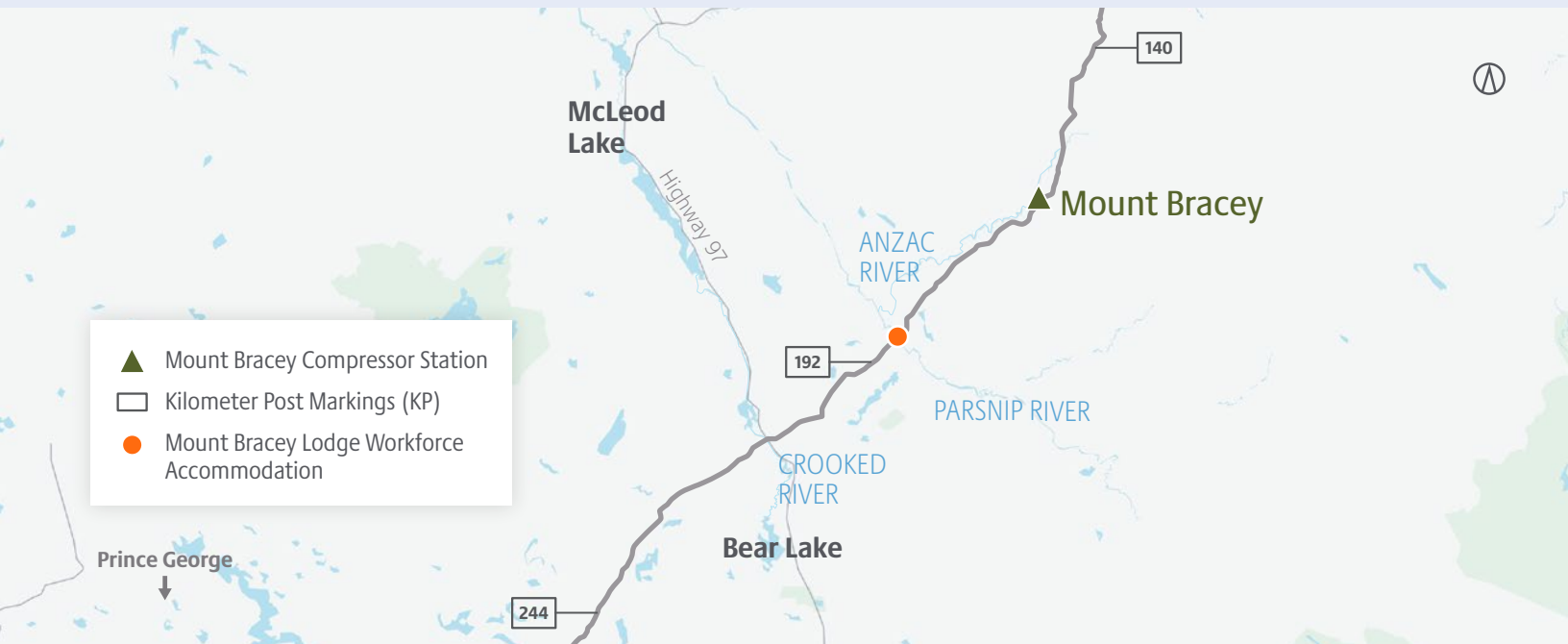
\*100% of Purchase Orders/  
Requisitions issued



**274**

Season 1 peak  
personnel at site\*

\*Based on Workforce Accommodation occupancy;  
includes Prime Contractor, CGL, Horizon North



## Highlights

From project start to May 2025

- ✓ Procurement of equipment and materials complete – deliveries ongoing
- ✓ Workforce accommodations provided by Horizon North at Mount Bracey Lodge
- ✓ Prime Contractor, Strike Group, completed Season 1 of construction

Season 1 of construction at the Mount Bracey Compressor Station (MBCS) facility focused on completing planned civil activities which will support Season 2 construction.

Season 2 early works commenced in May 2025, with initial tasks such as culvert installation, access road widening, continued structural steel installation and setting up a concrete batch plant. These efforts will support the mobilization and access for additional work fronts in 2025, including concrete pouring and erecting stick-built facility buildings.

## Key activities

- Piling activities
- Earthworks
- Structural steel installation
- Concrete work
- Offsite piping fabrication
- Offsite auxiliary building module fabrication

## Look ahead

Season 2 planned construction activities include:

- Piling activities
- Building foundations
- Installation of pre-assembled auxiliary buildings
- Stick-build of compressor unit buildings
- Compressor equipment installation
- Compressor unit cooler installation
- Structural steel installation
- Pipe welding and installation
- Electrical and instrumentation



## Meet the contractors

*Introducing the Prime Contractor:*  
**Strike Group**



Strike Group has been contracted to construct the Mount Bracey Compressor Station. Founded in 2004, Strike Group has grown to offer a full suite of infrastructure construction and maintenance services across 24 locations in Western Canada. They support a variety of industries including Oil & Gas, Midstream & Transportation, Petrochemical & Downstream, Power & Utility, Industrial & Mining, and Environmental & Renewable.

To learn more about Strike Group, click [here](#).

*Introducing the Workforce  
Accommodations Contractor:*  
**Horizon North**



Horizon North, now part of Dexterra Group, is a leading Canadian provider of infrastructure and operational support services, specializing in workforce accommodations, modular construction, and facilities management. The company delivers turnkey solutions for remote and industrial projects, supporting sectors such as mining, energy, forestry, and construction across Canada's remote and urban regions. With expertise in camp management, catering, and modular building construction, Horizon North ensures cost-effective and scalable housing solutions for resource-based industries.

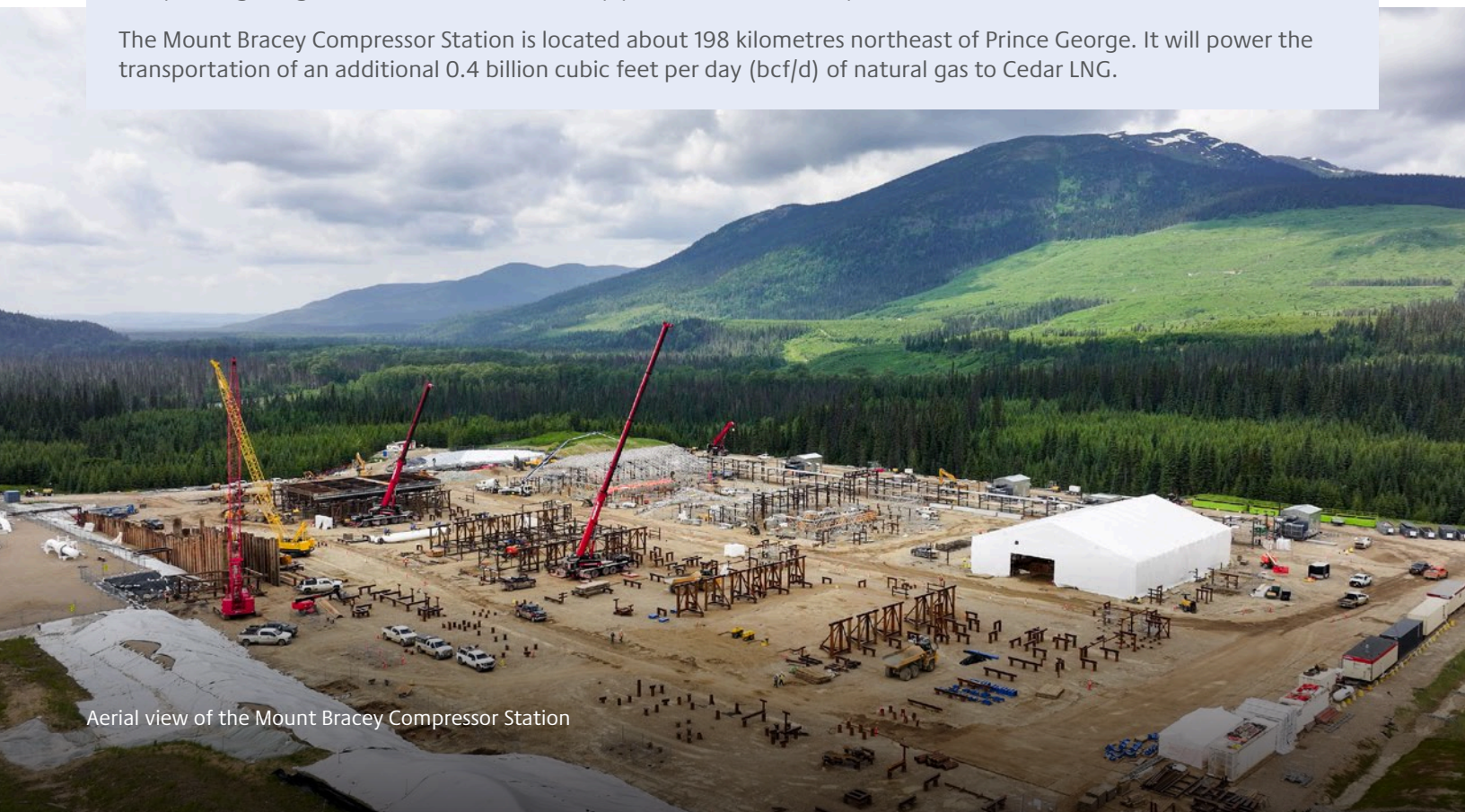
To learn more about Dexterra Group, click [here](#).

### The role of compressor stations

As natural gas flows along a pipeline, it slows due to friction with the pipe, resulting in a drop in pressure. To keep the gas flowing at a required rate, it is re-pressurized at locations along the pipeline. This is done by mechanically compressing the gas at sites connected to the pipeline, known as compressor stations.

The Mount Bracey Compressor Station is located about 198 kilometres northeast of Prince George. It will power the transportation of an additional 0.4 billion cubic feet per day (bcf/d) of natural gas to Cedar LNG.

Aerial view of the Mount Bracey Compressor Station





## Commitment to safety and the environment

Robust water management and Erosion and Sediment Controls (ESC) are in place and operating at the MBCS site. These measures are intended to mitigate the potential risk of erosion, sediment migration, and Project runoff water from leaving the site. A site specific ESC plan has been developed and is being managed by Certified Professionals in ESC throughout the Project.

**Check out some images of our ESC measures in action at the MBCS:**



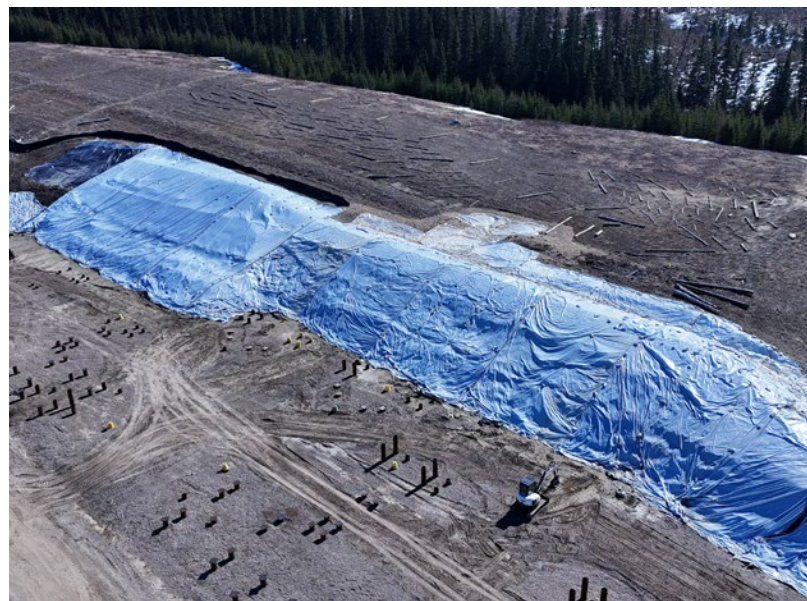
Slope lined with erosion blanket to reduce soil loss, enhance vegetative growth, and improve long-term slope stability.



Project runoff water is collected in holding ponds onsite.



Erosion control blanket installed and showing vegetation regrowth. Rock rip rap, green waddles and sediment fencing used to manage water and sediment on site.



Poly installed to prevent erosion on a slope before engineered cover management can be permanently installed.



## Indigenous monitoring programs at Mount Bracey

### Community Workforce Accommodation Advisor (CWAA) and Construction Monitoring and Community Liaison (CMCL) Programs

The successful CWAA and CMCL programs introduced during construction of Coastal GasLink have continued in support of Cedar Link construction.

CMCL's play an integral role in the Project by monitoring construction activities. In 2025, the six Treaty 8 CMCL Advisors have been monitoring the work occurring at Mount Bracey Compressor Station.

The CWAA Program provides opportunities for Indigenous participation at the Mount Bracey workforce accommodation, within the Traditional Territory, for the purposes of:

- Hosting programming opportunities which enrich the lives of all workforce accommodation residents
- Creating opportunities of cross-cultural sharing and promoting understanding and respect for all residents
- Planning and organizing events for days of significance

### Mount Bracey Lodge's Atāwiy Trading Post

From October to December 2024, CWAA implemented the Mount Bracey Atāwiy Trading Post at Mount Bracey featuring an Indigenous market and commissary for the workforce residents. The market featured crafts made by local and Indigenous artisans along the Coastal GasLink project route.



Atāwiy Trading Post at Mount Bracey.



CMCL Advisors have been monitoring work occurring at Mount Bracey Compressor Station.

# Cedar Link Connector and LNG Link Meter Station

## Progress at a glance



**9.4%**

Overall progress



**0%**

Construction progress\*

\*Mobilization planned for Q3 2025



**52.2%**

Procurement progress\*

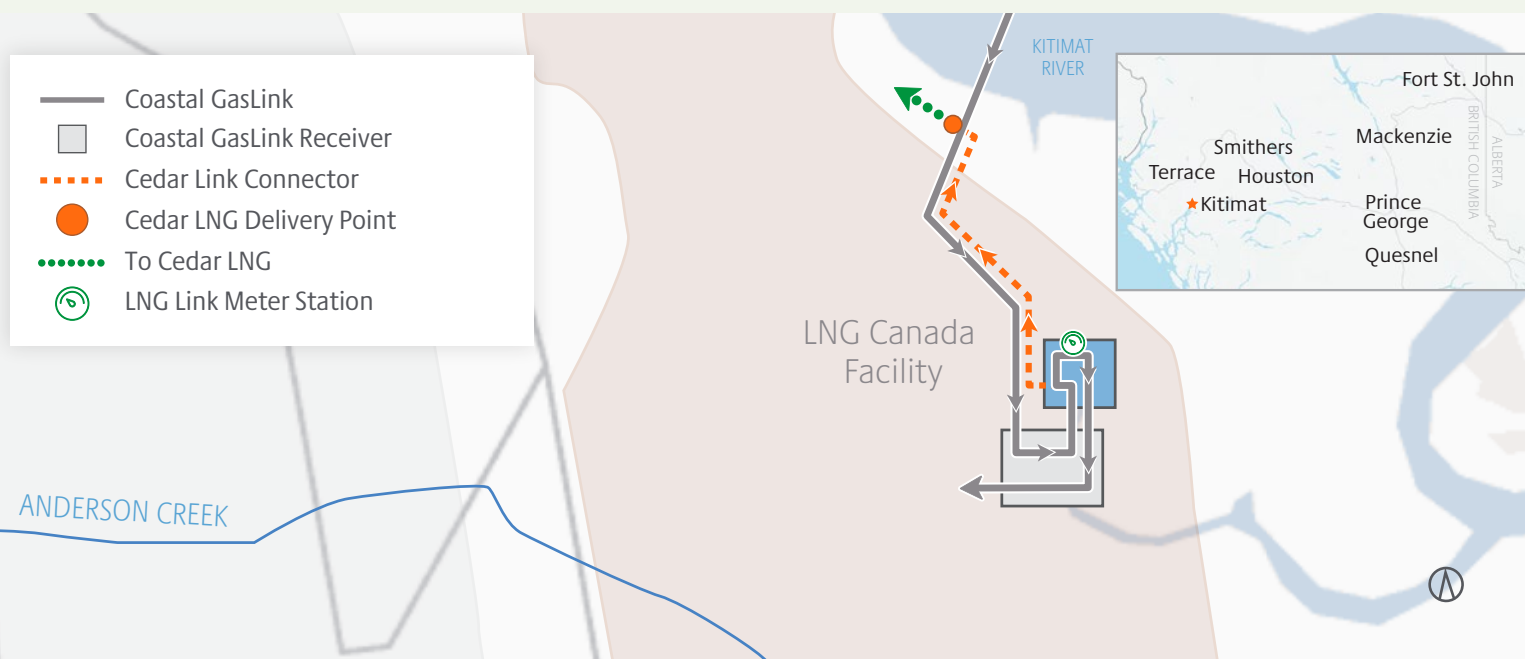
\*100% of Purchase Orders/ Requisitions issued



**Approx. 50 site-based personnel and 10 Coastal GasLink personnel**

Peak prime contractor workforce\*

\*Local accommodation in the Kitimat area is planned to be utilized during construction



## Highlights

Through close collaboration with LNG Canada and Cedar LNG, the 0.4 km Cedar Link Connector and the LNG Link Meter Station are expected to be finished construction in under 12 months. Construction will take place both inside and just outside the LNG Canada Export Facility.

The safety of all workers and the community are critical considerations in all of our construction planning activities.

## Key activities

- ✓ BC Energy Regulator permits received
- ✓ Procurement of equipment and materials complete – deliveries ongoing
- ✓ Prime Contract awarded to Surerus Murphy Joint Venture (SMJV) – fabrication has commenced, and construction readiness plans and documentation are being finalized
- ✓ Integrated Work Plan with LNG Canada has been approved allowing for construction work to begin in Q3 2025

## Look ahead

Construction activities planned for the remainder of 2025 include:

- Site preparation and excavation
- Piling activities
- Installation of pre-assembled buildings
- Structural work
- Connector pipeline
- Bund wall crossing
- Pipe installation and testing
- Electrical and instrumentation



## Meet the contractor

Introducing the Prime Contractor:  
**Surerus Murphy a Joint Venture  
Company (SMJV)**



SMJV is a multi-disciplined infrastructure construction company with expertise and a track record of delivering complex projects. SMJV enables energy and energy-transition ventures and are providers of pipeline and infrastructure services to transport, generate, compress, and deliver energy to facilities and users along a value chain. To learn more about SMJV click [here](#).

### The role of the Cedar Link Connector and LNG Link Meter Station

The Cedar Link Connector will be an approximately 0.4 km lateral pipeline that starts inside the LNG Canada export facility, travels within the facility footprint, and ends at a point just outside the facility wall for connection and delivery to Cedar LNG.

Coastal GasLink will also build the meter station in parallel with the connector to preserve accurate and independent measurement of natural gas delivered to LNG Canada once Cedar Link goes into operation. The new meter station will also be located within the LNG Canada export facility. The meter station consists of three nominal pipe size (NPS) 24-meter runs, each housed in a meter run building.

The tie-in valve connection to the Coastal GasLink system was completed August 2023 to avoid any disruption to LNG Canada after Coastal GasLink went into service.



Installed tie-in valve for the completion of the LNG Link Meter Station.



## Commitment to safety and the environment

Even though the majority of construction will occur within the LNG Canada Export Facility, the environmental planning and considerations associated with construction of this project have been extensive. Environmental Inspectors will monitor all construction activities to ensure compliance with the Environmental Protection Plan (EPP) and permit conditions.

### Highlights

- **Project EPP in place** – the EPP outlines measures to avoid or reduce potential adverse effects resulting from construction. All of the EPP commitments and conditions are closely tracked and monitored by Coastal GasLink.
- **Archaeological assessments conducted** – the footprint has been assessed for archaeology, with no features identified and no further work required. A Cultural Resource Discovery Contingency plan is available if resources are discovered.

- **Habitat protection** – the 0.4 km Cedar Link Connector is located ~ 200 m from the Kitimat River and its side channels. We have identified the area as potential habitat for marbled murrelet and nesting birds and amphibians. All required permits have been received to construct within the area which includes amphibian collection and relocation work, as required.



Marbled Murrelet.



### Learn how we can help **Build Strong** communities

Our social impact program, Build Strong, invests in organizations that are vital to our communities and crucial for our business.

Scan the QR code to learn more and explore opportunities for funding, scholarships, and in-kind support.

### Let's stay connected



Visit our website:  
**CoastalGasLink.com**



Follow us on Facebook:  
**@CoastalGasLink**



Email us:  
**coastalgaslink@tcenergy.com**



Follow us on X (formerly Twitter):  
**@CoastalGasLink**

**Coastal GasLink**

