

# Cedar Link Project

Construction Update Q1 2026

Coastal GasLink



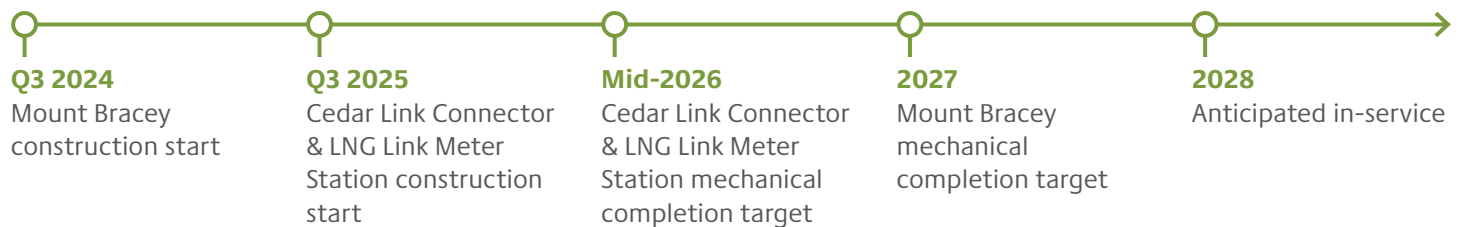
## About Cedar Link

To support Cedar LNG – the world’s first Indigenous-majority-owned LNG project – Coastal GasLink is implementing the Cedar Link Project: a 0.4 km lateral pipeline which will deliver natural gas from Coastal GasLink to a connection to Cedar LNG. Cedar Link will enable delivery

of up to 0.4 billion cubic feet per day (bcf/d) of natural gas from Coastal GasLink to Cedar LNG’s proposed floating liquefied natural gas (LNG) facility in Kitimat, BC, brought together by the Haisla Nation and Pembina Pipeline Corporation.

To support this incremental volume on the Coastal GasLink system, as well as LNG Canada’s current and future operational needs once delivery to the Cedar LNG Plant begins, Coastal GasLink will also add a new meter station and a new compressor station as part of this Project.

## Timeline



## Project progress at a glance



**65%**  
Overall progress



**61%**  
Construction progress



**90%**  
Procurement progress\*  
\*100% of Purchase Orders/Requisitions Issued

— Coastal GasLink Pipeline (In operation)

### Facilities

- ▲ Mount Bracey (Supporting Cedar LNG)
- ◆ Coastal GasLink Metering Facility (Complete)
- ▲ Coastal GasLink Compression & Metering Facility (Complete)
- LNG Canada Facility (3rd party)
- Mount Bracey Lodge Workforce Accommodation

Cedar Link Connector & LNG Link Meter Station

# Mount Bracey Compressor Station

## Progress at a glance



**64%**

Overall progress



**60%**

Construction progress



**90%**

Procurement progress\*

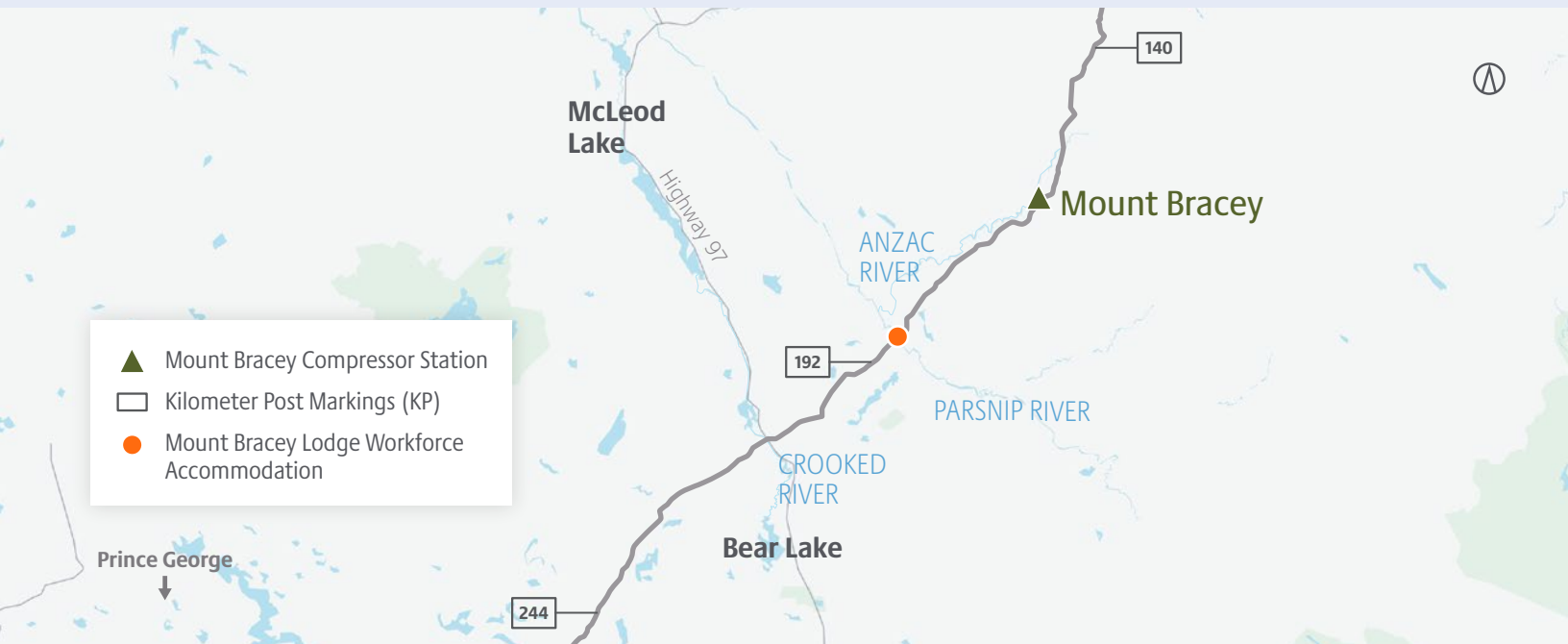
\*100% of Purchase Orders/  
Requisitions issued



**303**

Peak personnel at site during season 2 construction\*

\*Based on Workforce Accommodation occupancy; includes Prime Contractor, CGL and Horizon North



## Highlights

From June to December 2025

- ✓ Arrival of two out of three turbo compressor packages
- ✓ Arrival and placement of all modular auxiliary buildings
- ✓ Erection of all three compressor buildings
- ✓ Off-site completion of large piping spools

Season 2 construction finished strong, with construction teams meeting scheduled milestones. Key activities included the delivery, placement and integration of all auxiliary building modules, as well as the erection of all three compressor buildings. This progress enabled the rough setting of two out of three turbo compressors on site.

## Key activities

- ✓ Excavations to support installation of large pipe spools
- ✓ Electrical tray installation, grounding and cable pulling
- ✓ Integration of auxiliary buildings across the site
- ✓ Welding and installation of small and large bore piping

## Look ahead

- Arrival of final turbo compressor package from Italy
- Build-out and integration of the three compressor buildings
- System testing and inspections
- Commissioning and functional testing of all systems
- First startup and run testing
- Mechanical Completion



## Photo highlights

Take a look at photos from ongoing construction at the Mount Bracey Compressor Station (MBCS), capturing key moments from the site.



A large bore piping spool being positioned in place ahead of welding.



Installation of a turbo compressor in one of the Project's compressor buildings.



Aerial view of one of the MBCS coolers.



## Commitment to safety and the environment

Robust water management and Erosion and Sediment Controls (ESC) are in place and operating at the MBCS site. These measures are intended to mitigate the potential risk of erosion, sediment migration and Project runoff water from leaving the site. A site-specific ESC plan has been developed and is being managed by Certified Professionals in ESC throughout the Project.

**Check out some images of our ESC measures in action at the MBCS:**



The northwest slope has been restored with topsoil, seed, an erosion blanket and wattles to reduce runoff. A soil berm was installed on the pad site to prevent flow toward the slope. Vegetation began establishing, improving surface stability.



At the North Ditch drainage outlet, a bentonite blanket and rock armoring were installed, along with a culvert sediment trap and rock energy dissipator berm at the outlet. All disturbed areas were seeded and covered with an erosion control blanket to stabilize soil and promote seed germination.



At the southwest corner, swales were lined with bentonite and armored with rock. Disturbed soils were seeded and covered with erosion control blankets for stabilization. Water is being handled through pumps directing flow to storage areas on-site.



At the southeast corner of the site, water bars and drainage runs were reinforced with bentonite blanket and rock cover. Disturbed areas were seeded and covered with erosion control or straw blankets. The topsoil pile was reshaped and treated with hydro mulch and seed to promote revegetation and minimize erosion.



## Indigenous Monitoring Programs

The successful Community Workforce Accommodation Advisor (CWAA) and Construction Monitoring and Community Liaison (CMCL) programs introduced during the construction of Coastal GasLink have continued in support of Cedar Link construction.

CMCL Advisors play an integral role in the Project by monitoring construction activities. In 2025, six Treaty 8 CMCL Advisors have been monitoring the work occurring at Mount Bracey Compressor Station. In September 2025, the Haisla CMCL Advisor began monitoring the work occurring at the Cedar Link Connector and LNG Link Meter Station.

The CWAA Program provides opportunities for Indigenous participation at the Mount Bracey workforce accommodation, for the purposes of:

- Hosting programming opportunities which enrich the lives of all workforce accommodation residents
- Creating opportunities for cross-cultural sharing and promoting understanding and respect for all residents
- Planning and organizing events for days of significance, such as National Indigenous Peoples Day and the National Day for Truth and Reconciliation

## Mount Bracey Lodge's Atāwiy Market

In October 2025, the CWAA Program reopened the Mount Bracey Atāwiy Market, selling personal care items and light refreshments to residents. The Atāwiy Market provides moments of connection with the workforce and reduces the need for residents to drive the Forest Service Road (FSR) to access personal and comfort items.

For the month of December 2025, the Atāwiy Market expanded to feature crafts made by local Indigenous artisans, providing holiday shopping opportunities for the workforce and supporting local vendors.

Feedback has been overwhelmingly positive. The market's location has become a hub for personal connection within the Lodge, with many residents visiting on a regular basis to connect with the CWAA Coordinator and learn more about the Program and upcoming events.

## Tipi Raising

On September 30, 2025 – the National Day for Truth and Reconciliation – the CWAA and CMCL teams raised a 10-foot tipi in the outdoor recreational area at Mount Bracey Lodge, after the Programs received several requests from residents for a culturally safe place to smudge.

This space – a symbol of respect, connection and culture – offers the workforce a place to reflect, connect and honour Indigenous traditions, creating a culturally safe environment.

The CWAA Program shared etiquette and information about smudging with the workforce. CWAA also hosted a smudge spray making workshop that was very well attended.

Indigenous participation and perspectives are embedded in our day-to-day operations and on projects like Cedar Link, making these values central to how we work.



The new tipi at Mount Bracey Lodge.



Table lined with crafts by local artisans at the Atāwiy Market.

# Cedar Link Connector and LNG Link Meter Station

## Progress at a glance



**47.5%**

Overall progress



**61.3%**

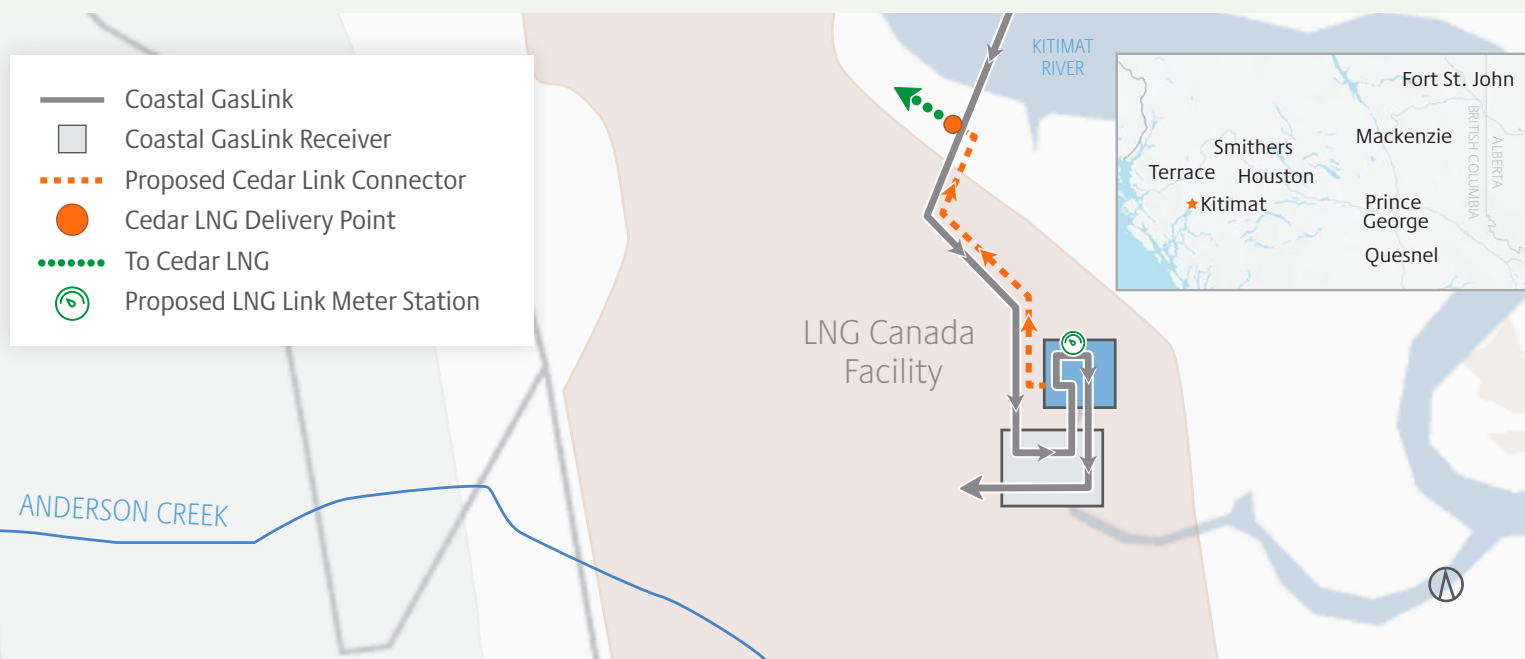
Construction progress\*



**99.1%**

Procurement progress\*

\*100% of Purchase Orders/Requisitions issued



## Highlights

From June to December 2025

Through close collaboration with LNG Canada and Cedar LNG, the 0.4 km Cedar Link Connector and the LNG Link Meter Station are expected to be finished construction in Q2 2026. Construction is ongoing inside and just outside the LNG Canada Export Facility. The safety of all workers and the community are critical considerations in all of our construction planning activities.

## Key activities

- ✓ Piling completed in Q3 2025
- ✓ NPS 20 pipeline installation completed in collaboration with all stakeholders
- ✓ Bund Wall crossing complete
- ✓ All buildings delivered to site and installed
- ✓ Flow control valve and mainline block valve assemblies complete
- ✓ All metering spools received and installed

## Look ahead

Construction activities planned for the remainder of 2026 include:

- Final tie-in to existing CGL Pipeline
- Final completion of NPS 48 piping
- Final installation of Electrical and Instrumentation
- Hydrostatic testing
- Electrical Permit acceptance
- Site commissioning activities
- Final site cleanup, including all fencing and safety marking installation

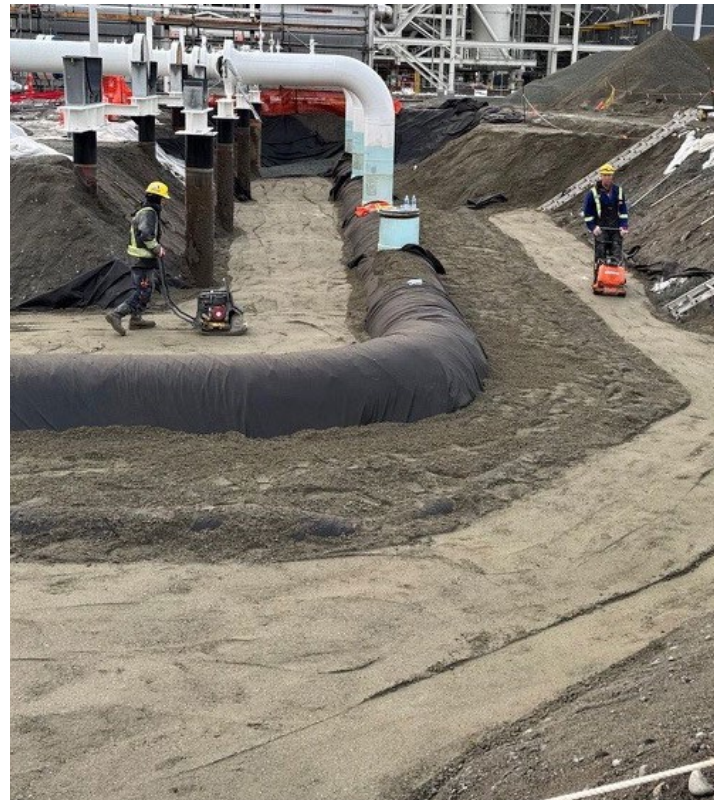


## Photo highlights

Take a look at some photos from ongoing construction at the Cedar Link Connector and LNG Link Meter Station, capturing key moments from the site.



Aerial view of NPS 48 pipe installation around the meter run buildings and NPS 24 headers at LNG Link Meter Station.



Backfill and compaction of the LNG Link Meter Station NPS 48 piping.





## Commitment to safety and the environment

Even though the majority of construction will occur within the LNG Canada Export Facility, the environmental planning and considerations associated with construction of this project have been extensive. Environmental Inspectors will monitor all construction activities to ensure compliance with the Environmental Protection Plan (EPP) and permit conditions.

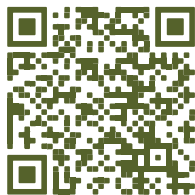
### Highlights

- **Project EPP in place** – the EPP outlines measures to avoid or reduce potential adverse effects resulting from construction. All of the EPP commitments and conditions are closely tracked and monitored by Coastal GasLink.
- **Archaeological assessments conducted** – the footprint has been assessed for archaeology, with no features identified and no further work required. A Cultural Resource Discovery Contingency plan is available if resources are discovered.

- **Habitat protection** – the 0.4 km Cedar Link Connector is located ~ 200 m from the Kitimat River and its side channels. We have identified the area as potential habitat for marbled murrelet and nesting birds and amphibians. All required permits have been received to construct within the area which includes amphibian collection and relocation work, as required.



Marbled Murrelet.



### Learn how we can help **Build Strong** communities

Our social impact program, Build Strong, invests in organizations that are vital to our communities and crucial for our business.

Scan the QR code to learn more and explore opportunities for funding, scholarships and in-kind support.

### Let's stay connected



Visit our website:  
[CoastalGasLink.com](https://CoastalGasLink.com)



Follow us on Facebook:  
[@CoastalGasLink](https://www.facebook.com/CoastalGasLink)



Email us:  
[coastalgaslink@tcenergy.com](mailto:coastalgaslink@tcenergy.com)



Follow us on X (formerly Twitter):  
[@CoastalGasLink](https://twitter.com/CoastalGasLink)

**Coastal GasLink**

